



Centre for
Secure
Computing

Tim Watson

Overview

Capabilities and
Facilities

Education and
Training

Research

Specialist Services

Cyber Range

Centre for Secure Computing

Building Trust in an Uncertain World



Tim Watson

Dept. of Computer Technology
De Montfort University
Leicester, UK

tw@dmu.ac.uk



Centre for
Secure
Computing

Tim Watson

Overview

Capabilities and
Facilities

Education and
Training

Research

Specialist Services

Cyber Range

Overview

De Montfort University's **Centre for Secure Computing** is a multi-disciplinary group of twelve academics and various industry experts who focus on a wide variety of computer forensics and security issues.

The group's work combines a thorough understanding of real-world digital environments with deep insights into their theoretical foundations.





Centre for
Secure
Computing

Tim Watson

Overview

Capabilities and
Facilities

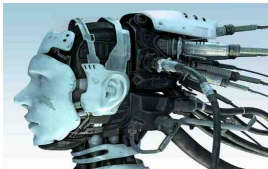
Education and
Training

Research

Specialist Services

Cyber Range

Capabilities and Facilities

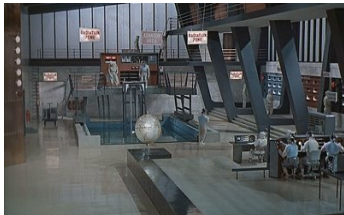


Capabilities:

- ▶ Education and Training
- ▶ Research
- ▶ Specialist Services

Facilities:

- ▶ Cyber Range
- ▶ Forensic/Security Labs
- ▶ Secure Datacentre
- ▶ RF/EM Facilities





Education and Training

UG and PG courses of study:

- ▶ BSc/MSc Computer Security
- ▶ BSc/MSc Forensic Computing
- ▶ PhD Research



Training courses include:

- ▶ Operational Security
- ▶ Cyberwarfare and CND
- ▶ Malware Forensics
- ▶ Legal Aspects of Security
- ▶ SA and Incident Response
- ▶ Offensive Computing



Centre for
Secure
Computing

Tim Watson

Overview

Capabilities and
Facilities

Education and
Training

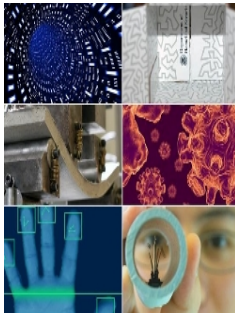
Research

Specialist Services

Cyber Range

Research

Current research projects include **cyber protection squad**, secure holography, **transport forensics**, situational awareness and **wide spectrum attribution**.



The group has a wide variety of expertise in both cyber and spectrum, including **network/host based security**, AI, **computational electromagnetics**, telematics and electronic design, **GSM/GPRS**, GPS and other GNSS systems, **industrial networks** and vehicle electronics.



Centre for
Secure
Computing

Tim Watson

Overview

Capabilities and
Facilities

Education and
Training

Research

Specialist Services

Cyber Range

Specialist Services

Services offered by the **Centre for Secure Computing** include training, testing, audit, data recovery, forensic investigation and incident response, contract research, software development, advice and consultancy, etc.

The group's specialist facilities, such as its **cyber range**, labs and secure datacentre (SC/DV required), can also be made available for one-off or regular periods.





Centre for
Secure
Computing

Tim Watson

Overview

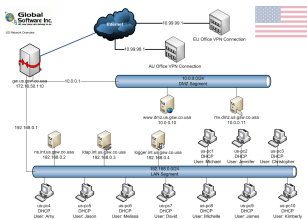
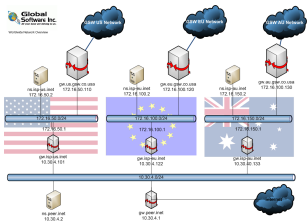
Capabilities and
Facilities

Education and
Training

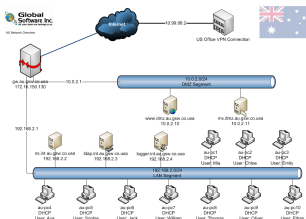
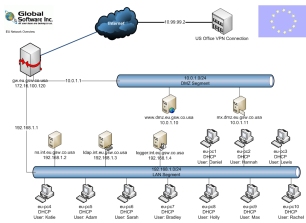
Research

Specialist Services

Cyber Range



Cyber Range





Centre for
Secure
Computing

Tim Watson

Overview

Capabilities and
Facilities

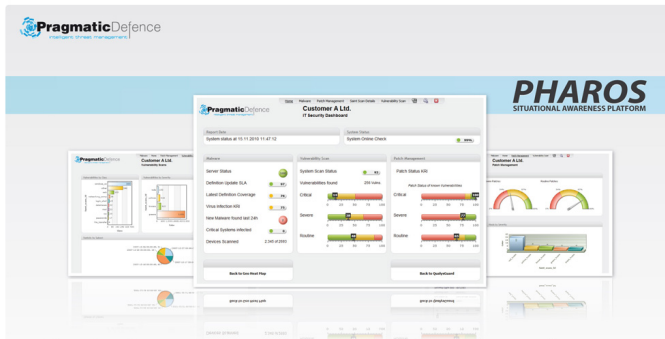
Education and
Training

Research

Specialist Services

Cyber Range

Pharos



Situationally Aware

Real-time visualisations combined with enlightened interactivity methods.

Ready for the Cloud

Local or cloud-based infrastructure available for remote monitoring and ease of access.

Status-Screens front-end

Quick-to-view screens highlight threats and confirm Service Level Agreements.

Intelligent Management System

Database abstraction layer provides access to any form of Database from any local or remote location.